



Style Savvy

# SKIRT SHAPES

Style Savvy's Glossary of Glam



## STRAIGHT

Also called a pencil skirt or tube, this skirt is fitted to the body from waist to hem.



## A-LINE

This cut is narrow at the waist and wider towards the hem, making it look like the letter "A".



## CIRCLE

This skirt is actually cut in a circle so that it's loose and full at the hem.



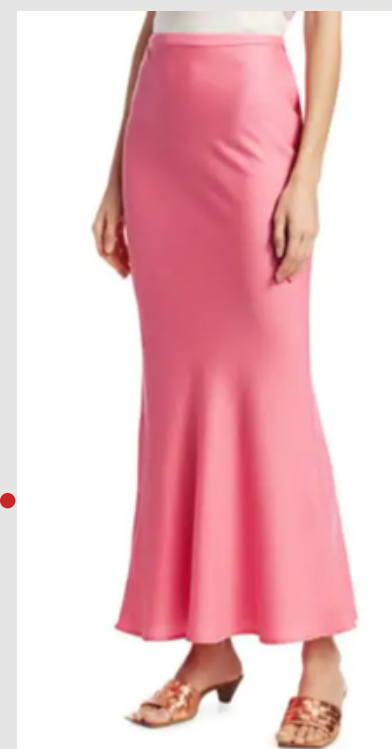
## WRAP

Wrap skirts, whether real or faux, have a top flap that wraps over the bottom flap.



## GODET

A godet skirt has triangular inserts near the hem that are sewn in narrow points towards the waist.



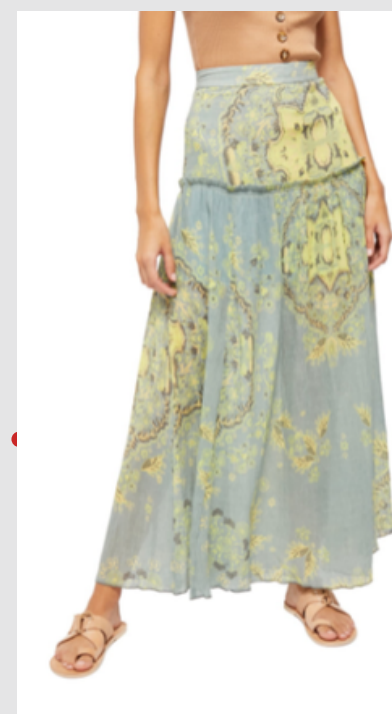
## MERMAID

Looks like a mermaid's tail. The skirt is fitted waist to knee and then flares out like a tail, frequently pleated.



## DRAPED

Drape skirts have fullness at one side which is gathered, or "draped".



## DROP WAIST

On this skirt, there is a yoke (additional seam) below the waist, usually at the hip.

Lindsay Burns Personal Stylist and Wardrobe Consultant

Helping "you" create "YOU"!

[www.stylesavvyonline.com](http://www.stylesavvyonline.com)

702-596-2815